

T149N

T148N

T147N

T146N

T145N

T144N

T143N

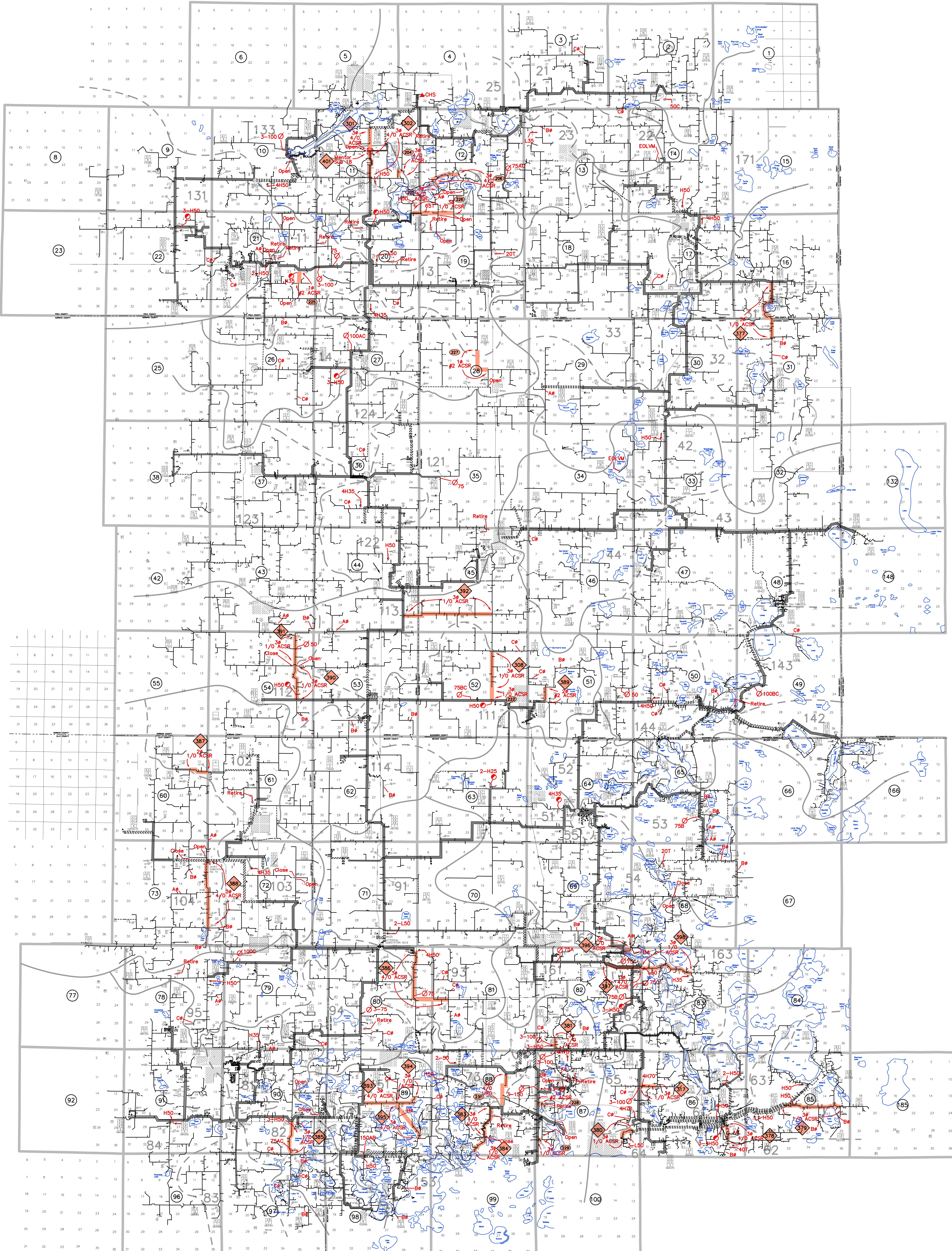
T142N

T141N

T140N

T139N

T138N



LEGEND

CONSTRUCTION LEGEND

- TRANSMISSION LINE (OTHERS)
- TRANSMISSION LINE (BY MANGOTA)
- SUBSTATION BOUNDARY
- FEEDER BOUNDARY
- FEEDER NUMBER
- SUBSTATION
- DISTRIBUTION LINE, NO. 6 (2) EQUIV.
- A, B & C PHASES, 1st OF 3 PHASE AT POINT 300
- UNDERGROUND DISTRIBUTION LINE, #1/0 AL EXCEPT AS NOTED
- 200 LINE REGULATOR, 25 AMP, IN 0 PHASE
- 151 FUSE
- THREE PHASE DISTRIBUTION SWITCH
- 150 REGULATOR (HUBBA FRAME, 24-28 OPERATIONS EXCEPT C-24-2C, K-14-3C, Z-14-1C) SECTIONALIZER
- 705 MIN-MAX VOLT METER

- WORK PLAN PROJECT
- TIE LINE PROJECT NUMBER
- CONVERSION PROJECT NUMBER
- 100KVA INSTALL CAPACITORS, SIZE INDICATED
- 20T INSTALL FUSE, SIZE INDICATED
- H35 INSTALL OCR, SIZE INDICATED
- 75 INSTALL REGULATOR, SIZE INDICATED
- CHANGE AS INDICATED

3000 Demand
4000 Maximum Loading
CALCULATED VOLTAGE DROP
120 VOLT BASE AND PEAK MONTH LOADS

| | | |
|--|--|----|
| WILD RICE ELECTRIC COOPERATIVE, INC. MINNESOTA 82 BECKER MAHONOMEN, MINNESOTA DWN: 025 1/8/2016 REV: 11/28/2016 | | |
| CIRCUIT DIAGRAM 2017-2020 WORK PLAN | | |
| | | M2 |